

COMPANY PROFILE



WE HELP YOU
TO BUILD YOUR
VISION



www.crmeyer.com



Every project is unique. Even changing the swing of a door can bring its own set of obstacles and its own set of solutions. Big or small, the success of every project is a result of **a contractor who looks at all the angles.**

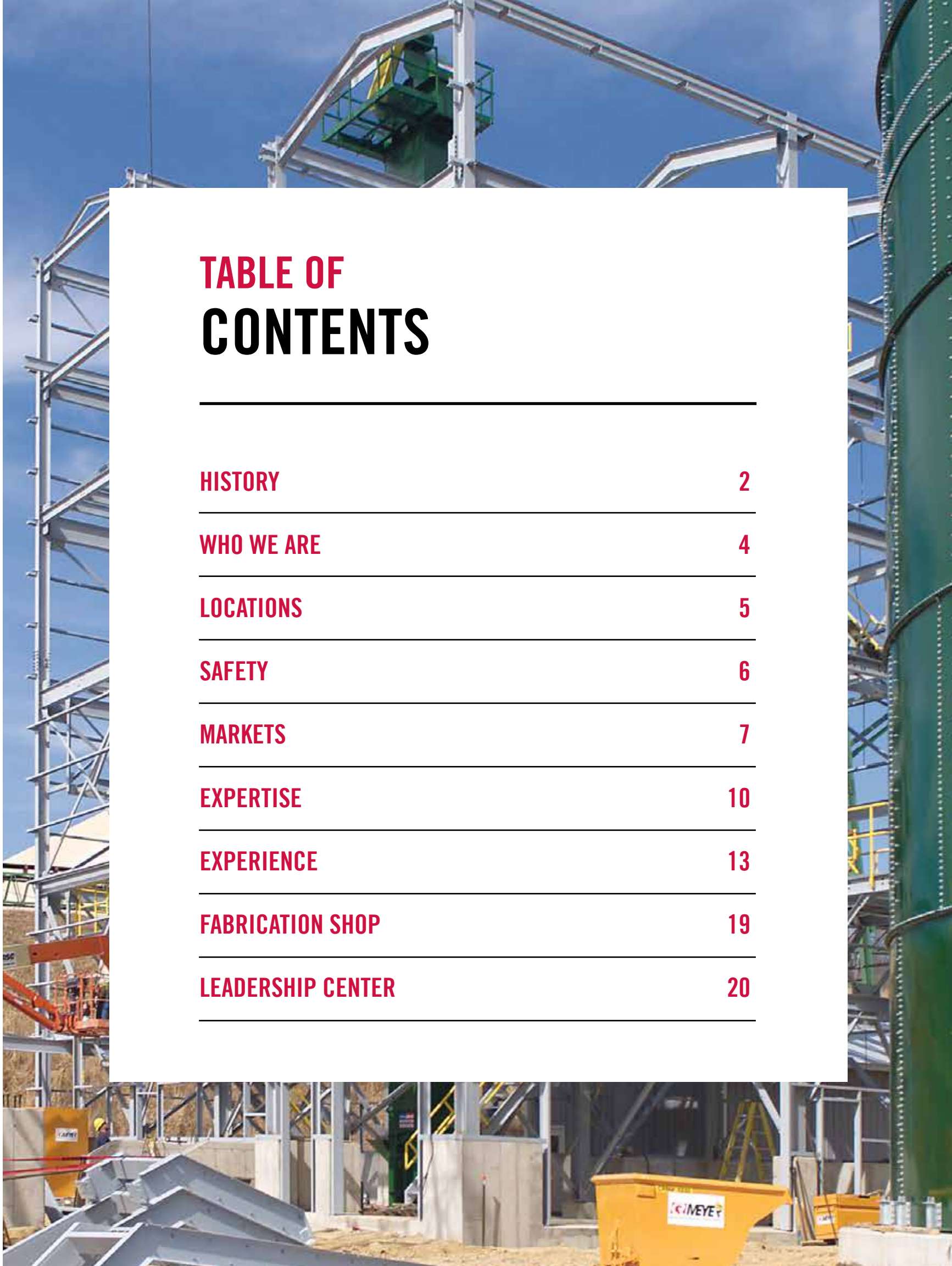
It is determined by a contractor who carefully plans every aspect of the job before the first tool is ever taken out of the box.

Success of any project comes in **the value CR Meyer brings by minimizing your risk** at every point in the process.

We earn our reputation on every project we build. We’ve been working that way since 1888.

TABLE OF CONTENTS

HISTORY	2
WHO WE ARE	4
LOCATIONS	5
SAFETY	6
MARKETS	7
EXPERTISE	10
EXPERIENCE	13
FABRICATION SHOP	19
LEADERSHIP CENTER	20



OUR HISTORY



1912

C.R. Meyer and Sons Company is incorporated, still primarily a masonry company. C.R.'s sons Edward H. and Harry D. have been trained as masons' tenders since childhood.

Churches, schools, hotels, and the mansions of Oshkosh's wealthy industrialists are built by the masons of C.R. Meyer and Sons Co.



1891
ATHEARN HOTEL

C.R. Meyer and Sons Co. completed the four stories of distinctive brickwork on the Athearn Hotel at High and Commerce Street in Oshkosh, Wisconsin. Completed in 1891, it was designed by popular local architect William Waters, the same man who designed the Oshkosh Opera House. The two buildings were joined by an underground tunnel. The hotel was razed in 1965.



1928
BERGSTROM MILL

In 1928, C.R. Meyer and Sons Co. inadvertently became a general contractor while building the Bergstrom Paper Mill in downtown Neenah, Wisconsin. C.R. was asked to take over the carpentry after the carpentry contractor abandoned his contract due to a faulty bid. From this job forward, C.R. Meyer and Sons Co. manages complete construction projects as a self-performing general contractor.



1941-1949
PEAVY & BIG QUINNESEC FALLS

Post WWII Industrialization required huge investments in hydroelectric power, and C.R. Meyer and Sons Co. contributed mightily to multiple power generation projects. Peavy Falls, located in Iron County of Michigan's Upper Peninsula, was built from 1941-1943 by a swarm of workers from C.R. Meyer and Sons Co. for Wisconsin-Michigan Light and Power Company. In continuous operation for seven decades, the hydroelectric dam harnesses the power of the Michigan River by storing spring runoff and supplementing low flows for power generation. Big Quinnesec Falls, 92 feet tall and 530 feet long, is located on the Menominee River in Dickinson County, Michigan. It was built for the Wisconsin Electric Power Company in 1949.

1932

C.R. retires and hands the business down to his sons, Edward (president) and Harry (vice president). He dies two years later at age 84.

1939

Harry Meyer is named company president when his brother, Edward, exits the company to establish his own commercial enterprise.

Harry hires the company's first structural engineer, a pivotal step that positions C.R. Meyer and Sons Co. as a capable heavy industrial contractor. They begin to work in setting of heavy equipment, emergency industrial repair, engineering, and planning.



Harry Meyer

1963

Fred W. Pinkerton, Sr. is named company president upon the retirement of Harry Meyer. Fred joined the company as a timekeeper in 1937 and rose through the ranks. He was the husband of Harry Meyer's only child, Marjorie.

Fred was responsible for hiring the firm's first architect, Cliff Rosen, circa 1975. He also oversaw the purchase of the crane fleet of Griese & Ross in the 1980s, adding heavy equipment to the firm's portfolio.



Fred W. Pinkerton, Sr.



1964
MARATHON PAPER

After constructing mills and setting machines years earlier at Marathon Paper in Menominee, Michigan, C.R. Meyer and Sons Co. is consistently invited back to rebuild machines and expand our customers' production capacity. Our engineers and tradesmen are always on the front lines of building lasting relationships just as often as they build productive factories, mills, and plants.



1982
WISCONSIN TISSUE MILLS

Wisconsin Tissue Mills of Menasha, Wisconsin, contracted with C.R. Meyer and Sons Co. in 1982 to construct a new machine room and erect its new 65,000-ton annual capacity Beloit paper machine (PM#3) and Yankee dryer. Completed 44 days ahead of schedule, the expansion was widely respected in the industry as C.R. Meyer and Sons Co.'s trademark combination of contracting, engineering, machine erection, and construction management skills.

1985

Fred M. Pinkerton, Jr. was close to his Grandpa Harry as a child before going on to earn his business degree from UW-Madison. Deeply passionate about architecture, Fred Jr. was an early proponent of melding design and construction services under one roof, known today in the industry as design/build.

As a natural outgrowth of Harry Meyer's decision to hire structural engineers many years before, Fred Jr. significantly expanded the firm's team of talented architects. By the early 1990s, C.R. Meyer and Sons Co. was one of the only construction firms in all of Wisconsin to pioneer computer-assisted design services.



Fred M. Pinkerton, Jr.



2006
KIMBERLY-CLARK

Much of Kimberly-Clark's early 140-year history of expanding production and innovation in Wisconsin's Paper Valley region was performed within mills constructed and equipped by C.R. Meyer and Sons Co. Neenah Paper, the Kimberly Mill, the Whiting Mill, and the Niagara Mill were built by C.R. Meyer and Sons Co. tradesmen who then went on to set their paper machines and ancillary equipment. C.R. Meyer and Sons Co.'s first out-of-state Kimberly-Clark machine rebuild was in 1987 in New Milford, Connecticut. In 1996, the two companies began nearly two decades of partnership at the Kimberly-Clark mill in Beech Island, South Carolina. Together, they built two new tissue machines, more than a million new square feet of production space, the development of several brand new product sectors, and updated distribution centers.



2013
FABRICATION SHOP

In 2013, The Fab Shop (established in 2011) moved to its current Kaukauna location of 59,500 square feet. The decision to get into fabrication gives CR Meyer more flexibility to supply and install process pipe.



Darren Lett, P.E.

2011

Darren Lett, P.E., is promoted to president of the company upon Phil Martini's promotion to company CEO.

Darren seeks to develop growth within the industries CR Meyer knows so well, expanding capabilities within the trades we self perform with uncompromisingly delivering on safety, quality, and scheduling expectations.



Phillip J. Martini, P.E.

1997

Phillip J. Martini, P.E., is named president upon Fred Jr.'s retirement. He led the company in a rapid expansion of satellite offices across the United States to maintain responsive business relationships within a swiftly consolidating papermaking industry.

Current CR Meyer satellite offices are located in Rhinelander, WI; Escanaba, MI; Tulsa, OK; Chester, PA; Muskegon, MI; Coleraine, MN; Byron, GA; and Green Bay, WI. Phil was named CEO of CR Meyer in 2011.

2007

CR Meyer starts self-performing piping.

2019

CR Meyer is consistently named to the top 20 industrial contractors across the U.S. by *Engineering News Record* (ENR). In 2019, the company was ranked the #1 industrial contracting firm serving the pulp and paper industry.

2020

CR Meyer starts self-performing electrical.



2018
LEADERSHIP CENTER

Training has always been the foundation for developing successful leaders. To assist with an expanding training regime, CR Meyer acquired a facility in Kaukauna, Wisconsin, named the Charles R. Meyer Leadership Center. By investing in our future through training, we are making an investment into our employees to become the future leaders of our company.



Building Your Vision for over 130 Years

The highlighted projects on this timeline were chosen to illustrate the overall evolution of CR Meyer since its inception in 1888. The timeline represents only a select sampling of CR Meyer's vast capabilities, completed projects, and clients.

WHO WE ARE



OUR LOCATIONS

Established in 1888, CR Meyer is a full service general contractor specializing in precision installation of industrial equipment, general construction, and plant maintenance. We are headquartered in Oshkosh, WI, and have eight satellite offices strategically located across the United States.

We consistently rank in the top 5 contractors in the pulp and paper industry (#1 2019 & 2018, #2 2015) and in the top 20 industrial contractors by Engineering News Record (ENR), as well as placing in the publication's Top 400 Contractors year on year.

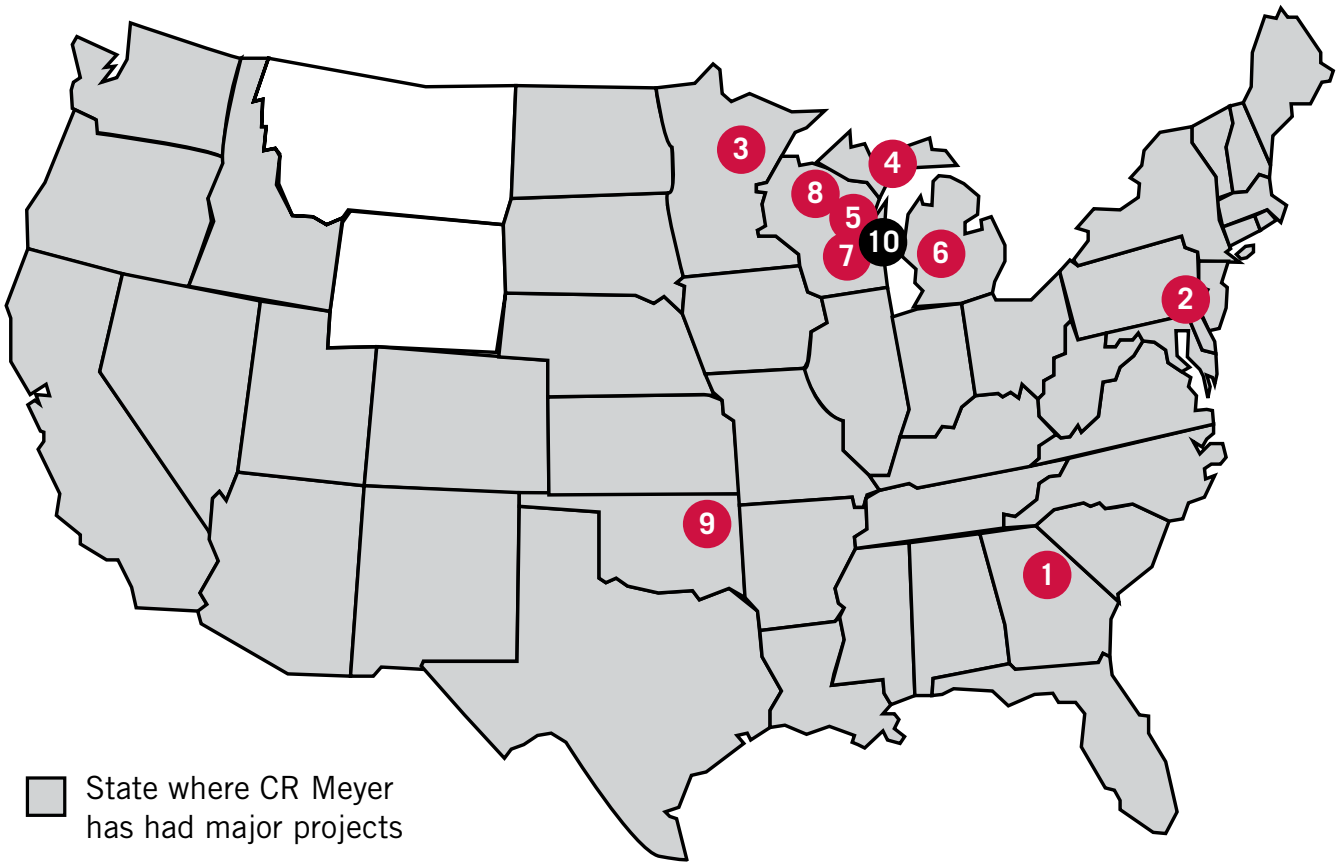


Our mission is to be your trusted expert in industrial contracting; to drive the success of our industry partners in safely visualizing, designing and building their future.

We support our mission through our core values (safety leadership, steadfast integrity, quality tradework, financial stewardship, creative professionals, and trusting relationships) that we hold our company accountable to.

Over the years, CR Meyer has grown to employ over 190 office personnel and averages 1,500, with peaks in excess of 2,000, skilled union tradespeople across nine market sectors. We employ boilermakers, carpenters, concrete finishers, electricians, laborers, operators, ironworkers, masons, millwrights, pile drivers and pipefitters. CR Meyer's engineers, architects and project managers creatively partner with customers to design for optimum constructability to meet the customers most rigorous quality, budgetary and timeline objectives.

During the course of any single year, CR Meyer performs hundreds of projects that range from simple concrete foundations to construction and start-up of state-of-the-art industrial facilities. This success is only possible because of the loyalty and support of our customers. Just as we celebrate multiple generations of families in our talented workforce, we thank the many customers who have trusted us for decades - and some, well over a century. These treasured relationships are the foundation of our work and the focus of our future.



- | | | |
|---|---|---|
| 1 BYRON
108 Pat Joiner Blvd
Byron, GA 31008
478.956.3331 | 2 CHESTER
100 Morton Avenue
Chester, PA 19013
610.874.0231 | 3 COLERAINE
103 Industrial Park Drive
Coleraine, MN 55722
218.245.2766 |
| 4 ESCANABA
1717 N 26th Street
Escanaba, MI 49829
906.233.9914 | 5 GREEN BAY
510 Lombardi Avenue
Green Bay, WI 54304
920.436.0164 | 6 MUSKEGON
2516 Glade Street
Muskegon, MI 49444
231.739.9232 |
| 7 OSHKOSH (CORPORATE)
895 W 20th Avenue
Oshkosh, WI 54902
920.235.3350 | 8 RHINELANDER
1890 N Stevens Street
Rhineland, WI 54501
715.369.2223 | 9 TULSA
1001 Fort Gibson Road
Catoosa, OK 74015
918.254.4347 |
| | 10 FABRICATION SERVICES
820 East Hyland Avenue
Kaukauna, WI 54130
920.379.5172 | |

PROACTIVE SAFETY



OUR MARKETS

We make no compromises when it comes to the safety of our job sites. That's why we have worked so diligently to adopt a zero-injury culture at CR Meyer. We exceed OSHA requirements and require regular drug and alcohol screenings to help ensure the safety of our job sites and minimize the risk to our customers.

To accomplish our great track record of success in safety, all employees are trained in the latest safety techniques and are uncompromising in their use of personal protective equipment. We enhance their education through the commitment and accountability of managers and key field personnel. Most importantly, we actively work to engineer and plan the risk out of projects. We develop comprehensive safety plans, complete with daily pre-task planning. We know what to expect at the beginning of each day of work and arrange the work to eliminate potential pitfalls.

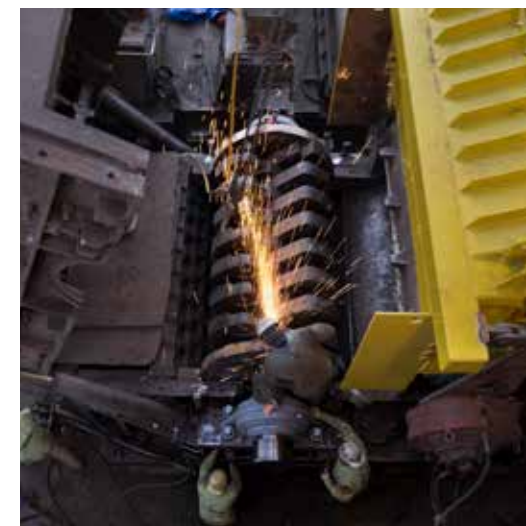


PULP & PAPER

There isn't an area in a pulp and paper facility that our crews have not installed a new piece of equipment, poured a foundation, or replaced a worn-out part during an around-the-clock outage.

CR Meyer takes pride in building complete new facilities and maintaining them long after they are completed. CR Meyer's experience extends from the woodyard to stock prep, from the paper machine to converting, and continues to the waste water treatment plant.

Our professionals will assist you with your facility feasibility study, help select the lowest cost location to install your new winder, or provide a price to install a new paper machine shoe press. Employing in-house structural engineers and architects, we can furnish a Design/Build price to construct a new paper machine building, a chipper foundation, or an operator's control room.



SCRAP & RECYCLING

Complex installations of heavy shredders, balers and motors require a crew that understands the nuances of these powerful machines. CR Meyer's expertise includes the precise order of installation, the exact location of welds and liners, and knowledge that extends far beyond a manufacturer's basic instructions. Choose to work with a general contractor who emphasizes safety and professionalism. Our in-house design staff can assist you with every aspect of the project, from the initial feasibility study to the civil/structural/architectural design and project close out. CR Meyer's skilled crews of union ironworkers, millwrights, carpenters, laborers, operators, bricklayers, pipefitters, boilermakers, sheet metal workers, and concrete finishers are your expert partners.



OIL & GAS

The oil and gas industry is a hazardous work environment, especially if you are performing a construction project. CR Meyer's ability to follow site-specific work rules and our own safety policies helps reduce the client's exposure to risk. CR Meyer's team of professionals develops a site-specific safety plan for each of our clients' individual projects. To maximize safety and productivity, we complete pre-task planning forms for each job we perform.



In 2006, CR Meyer was the first contractor in the nation to be selected for the Star Level of the OSHA VPP Mobile Workforce Demonstration Program for the state of Wisconsin and has maintained the recognition year on year ever since.

In 2017, CR Meyer earned the Associated General Contractors (AGC) of Wisconsin's highest safety honor, Level III Wisconsin Safety Excellence (WISE). The AGC of Wisconsin's Safety Excellence Program is designed to recognize AGC members' commitment to safety management. The WISE designation is earned by meeting OSHA construction safety standards and undergoing a successful audit of the firm's safety management program and physical worksites.



The loss of valued people, the loss of time, and the loss of money have a significant effect on the outcome of the project. That's why we have taken an unyielding, proactive approach to safety programs. It's why our people deliver an outstanding safety performance. It's also one of the reasons why CR Meyer is the wisest choice for your next project.

OUR MARKETS



MINING

CR Meyer's experienced field crews of union ironworkers, millwrights, carpenters, laborers, operators, bricklayers, pipefitters, boilermakers, sheet metal workers, and concrete finishers have the knowledge and skills to solve the most complex challenges the mining industry can present.

Our in-house engineering staff can assist you with everything from the initial feasibility study and civil/structural/architectural design services for your project through completion of the punch list.

CR Meyer's extensive experience with equipment installation, the foundations on which they are installed, and the buildings that enclose them, allow us to offer immeasurable insight into your project, making sure you select a path that will be the most profitable for you. We've worked on numerous mining projects from ball and rod mills, to kilns.



CONVERTING/PRINTING/PLASTICS/PACKAGING

CR Meyer has been a partner to the printing, converting, plastics and packaging industries from the very beginning. We have a long and distinguished history of significant technical contributions to converting, printing, plastic and packaging plant construction, machine installations, efficiency, safety and regulatory compliance. Our experience spans over decades and includes the construction of the 13-facility campus for a packaging giant.

Consult with CR Meyer at the earliest stages of your construction or expansion project, and we will help uncover efficiencies and cost savings in your building and/or plant layout.



FOOD & BEVERAGE

CR Meyer has focused on providing expert project guidance for complex industrial plans since 1888. In the past 30 years, we brought this expertise to the food and beverage industry and its unique construction, equipment and sanitary requirements. Through our work, CR Meyer has helped increase productivity and efficiency in the production of milk, cheese, meat, jams and jellies, frozen pizza, beverages, beer, and more.



HYDRO/POWER GENERATION

CR Meyer has worked in the power industry for over 100 years, performing construction services on everything from new hydroelectric dams and coal fired powerhouses to installation of new combined heat and power facilities. Our construction crews perform maintenance services on the wide variety of powerhouse equipment located at these facilities, often during critical outages. This power industry experience allows us to be a valuable member of your construction team, whether planning to build a new facility or working to reduce your maintenance downtime.

Our staff of construction professionals can assist you with feasibility studies, planning, and management of your entire project. Field construction crews including boilermakers, ironworkers, millwrights, pipefitters, carpenters, laborers, bricklayers, sheet metal workers, concrete finishers, and operators, will ensure your project is constructed safely and with high quality.



GENERAL INDUSTRIAL

The Design/Build capabilities and complete construction services of CR Meyer focus on project cost, quality and timeline. In-house architectural and structural design closely integrated with project management provides the most economical means to complete a project. It has helped our customers solve the most complex of challenges with innovative thinking and unparalleled expertise.

There is no such thing as a project that is too big or too small for CR Meyer. Whether you run a small factory, a foundry or a sprawling manufacturing plant, you will be partnered with a project manager at CR Meyer who will link you to the people and capabilities you need. We take pride not only in building new facilities, but also helping to maintain those facilities and equipment on a scheduled or on-call basis.



MAINTENANCE SERVICES

The CR Meyer business model is based on solid relationships and repeat business. We are trusted to fulfill the maintenance services role at industrial facilities across the country. Our resident crews know the ins and outs of a facility which enables us to efficiently execute work, maintaining necessary quality standards and minimizing the impact on operations. The benefit of the resident contractor approach is that we flex our crews up and down to most efficiently match labor resources to work scope.

OUR EXPERTISE



ALIGNMENT

Properly installed and aligned equipment running at full capacity are key factors in driving increased production and less downtime. No matter the size or complexity of the job, our crews have a wide range of equipment and expertise to handle any alignment service. From conventional optical alignment equipment to more technical laser systems, CR Meyer can assist you in accurately maximizing your system performance. Our crews provide an in-depth understanding of how alignment issues can impact processes, then provide solutions, and make appropriate adjustments. Whether on an equipment outage or on a running machine, CR Meyer has the experience to complete your job safely, accurately, efficiently, and within budget.

BOILER SERVICES

Industrial clients turn to CR Meyer for boiler work, whether they need maintenance, repair or new construction of boilers or ancillary equipment. Our teams are able to rapidly mobilize in emergency situations and focus on getting our client's operations back online in a safe, timely, and high quality manner. Our commitment to quality is validated by holding the following certifications: ASME "R" Stamp Repair and/or Alteration of Boilers; ASME "U" Certificate Design & Construction of Unfired Pressure Vessel; ASME "S" Certificate Design & Construction of Boilers & Boiler Parts; and NBIC Certification.



CARPENTRY

While every part of a project is important, carpentry is the phase that often means the most to our customers. These are the details you will see every day – the finishing touches that mean the difference between a project that is simply finished and one that is truly a testament to quality and craftsmanship. At CR Meyer, we believe there are no second chances with your carpentry. Every detail has to be exact, every miter joint tight, and every corner square and true. That's why we keep a diverse, core group of expert craftsmen, each with multiple skill sets. All measure their work against one benchmark – perfection.

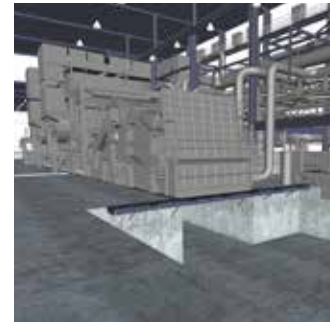
CONCRETE

From simple slabs and footings to the most complex concrete structures, the experts at CR Meyer leave nothing to chance. Precise planning ensures efficient placement and lasting finish for every concrete project. Our crews also have the equipment and expertise to handle superflat floors, hardener applications, and exotic finishes. That experience includes controlling dust and debris in the most demanding environments, such as healthcare facilities, technology manufacturers, and other clean environments.



DEMOLITION

The demolition professionals at CR Meyer approach every job with precise and proven methodology. We plan every aspect of the project and then execute that plan in the most efficient manner possible. Whether you're facing a full-scale building removal, or the surgical removal of one section of a facility, we carefully plan each step of the process. Maximizing efficiency, minimizing site impact, and eliminating the risk of unforeseen challenges are always our top priorities. Our crews have the tools and the experience to strictly follow procedures that control dust, noise, vibration, and fumes in critical environments. We have the teams needed to work around specific schedule requirements.



DESIGN/BUILD

CR Meyer's team of architects, engineers, and designers use Revit® building design software built for Building Information Modeling (BIM) to collaborate effectively on customers' design/build projects. BIM implements a 3-D model-based approach to simulate and analyze building designs that result in a better understanding of design complexity and labor and materials scope. CR Meyer teams work better together with customers to evaluate constructability and design intent before construction begins, gaining greater downstream visibility earlier in the process.

ELECTRICAL SERVICES

From design to installation or repair services for systems and infrastructure, CR Meyer delivers comprehensive electrical services. With our vast experience and extensive knowledge of power distribution, controls, instrumentation, fiber optics, and network cabling, CR Meyer is a knowledgeable source for any industrial or commercial project. CR Meyer's focus on safety, quality and craftsmanship drives our performance from the conceptual phase through final commissioning. By providing Electrical Preventative Maintenance (EPM), we ensure a safe, efficient, and trouble-free electrical operation long after project completion.



IRONWORKING

Every project we erect starts with concentrated planning. We study the project from every angle, identify all potential risks, and develop a plan to eliminate them. We strive to engineer the risk out of every equation. The ironworkers at CR Meyer are simply the best trained, safest professionals in the industry. Our ironworkers, qualified riggers, and certified welders, bring years of experience to your job with safety procedures that exceed OSHA guidelines. In addition, all of our crews operate under 100 percent tie-off policies. This results in an unprecedented safety record and assures you a professional, efficient completion of work.

MASONRY

In many cases, masonry is the focal point of a project. It's the first thing people see, and when done correctly, it leaves a lasting impression. That means your reputation is riding on the skill of the craftsmen and the quality of their work. We have a field-proven approach that uses tightly knit teams of professionals – experts who take pride in their own work and motivate others to do the same. We deliver decades of experience with brick, block, stone, and other materials. We support those skills with project management and design services that minimize your risk and ensure efficiency.



MILLWRIGHTING

The ultimate goal of every piece of equipment is to increase your company's efficiency and profitability. The need for precision installation of equipment is greater than ever before. Equipment is rotating faster and tolerances have to be dead on. The equipment needs to be installed correctly and up to full production as quickly as possible. No one can match the experience and quality of our millwrights, riggers, engineers, and project managers. We offer emergency repair and maintenance services for operations across the country. Simply call our toll free 800 number for 24/7 on-call service to get your machine up and running.

OUR EXPERTISE



OUR EXPERIENCE



PILE DRIVING

We have extensive experience driving steel, wood, concrete, and sheet piles. From residential boat docks to complex foundations and protective sea walls, our engineers and planners impart increased versatility to our pile driving and sheet pile crews. We have the ability to drive piles in the most challenging situations, including inside operating facilities and sites with environmental considerations.

PIPE FABRICATION

CR Meyer is heavily vested in high quality, accurate, and precise custom pipe fabrication for its customers. Our company operates a fully-equipped 59,500 square-foot pipe fabrication facility in the heart of Wisconsin's Fox River Valley with the ability to meet industry- or company-specific piping specifications, including those for process, hydraulic, pneumatic, steam, and specialty applications. Because piping systems are often on the critical path, CR Meyer's expert capabilities help assure properly fabricated and installed piping systems to speed check-out and pave the way for smooth start-ups. Visit www.crmeyerfab.com.



PIPING

On many projects, piping systems end up on the critical path. CR Meyer's pipefitters and equipment installation crews work side by side to ensure the critical path duration is minimized. This allows more time for checkout activities, assuring a smooth start-up. CR Meyer can streamline the construction process with full service mechanical installation. By having the piping and equipment installation crews on the same team, there is more control of the duration and quality of the project, putting you on the fast track to making a profit. Certificates of Authorization by the American Society of Mechanical Engineers (ASME) and the National Board of Boiler and Pressure Vessel Inspectors (NBIC) permit CR Meyer to perform installations requiring 'PP', 'U', 'S' and 'R' stamps.

PROFESSIONAL SERVICES

Our experienced construction managers and field supervisors are augmented by an in-house staff of registered architects and engineers to address all project requirements. Together, this team designs what you need built, as well as the best methods by which to build it. The professionals at CR Meyer design solutions that control project costs, maximize productivity, and provide construction crews with the tools necessary to perform their jobs safely and efficiently. Our approach allows customers to build above, around, and below running machinery or within the limits of occupied areas without costly shutdowns or relocations. It has saved customers the time and expense of redesigns and adaptations to unforeseen hurdles.



IRVING TISSUE TISSUE MACHINE AND CONVERTING FACILITY - MACON, GA

PROJECT SCOPE

CR Meyer is the general contractor of this greenfield tissue making and converting facility. The project includes: preparation of roads, parking, site grading, utilities, rail service, steam production, fresh water supply, fire protection, and site security; construction of an effluent treatment facility; new pulp storage and stock prep building; new parent roll storage building, new tissue converting building, and a new tissue machine building; installation of parent roll handling equipment and converting equipment including packaging and palletizing equipment; a new Valmet tissue machine and associated stock preparation equipment; and construction of a new finished goods warehouse, administration and maintenance buildings.



OUR EXPERIENCE



OUR EXPERIENCE

PRATT INDUSTRIES PM 16.5 INSTALLATION - VALPARAISO, IN

PROJECT SCOPE

CR Meyer installed a 246 inch, 1,100 TPD Corrugating Medium, Linerboard Paper Machine which included the following: twin wire forming section and couch pulper; press and press pulper; five section pre-dryer and broke conveyor; Size Press (Coater) and pulper; three section after-dryer and broke conveyor; calender, reel and pulper; winder and pulper; roll handling including mini-slat conveyors, strapper and lowerator/upender; and all associated walkways and fabric/felt change equipment.

The project involved the installation and alignment of 1,000 feet of pre-drilled and tapped machine sole plates, 47 machine drives, as well as unloading and marshaling of 320 sea containers.



ARAUCO RAUMASTER EQUIPMENT INSTALLATION - GRAYLING, MI

PROJECT SCOPE

Construction of a new particle board manufacturing facility from a greenfield site which resulted in a production capacity of 800,000 cubic meters per year - the largest particle board plant in North America with the largest 10 ft wide continuous particle board press in the world. Installation of the Raumaster equipment was required to process wood chips and logs in preparation for storage, screening, and conveying of raw materials to the manufacturing process.

A large part of the project was the installation of an extensive network of conveyor bridge structures which equated to over 37 individual two crane picks that were successfully planned out with critical lift plans and set into place by CR Meyer.



OUR EXPERIENCE



OUR EXPERIENCE

WE ENERGIES PINE DAM SPILLWAY REFURBISHMENT - FLORENCE, WI

PROJECT SCOPE

The owner wanted to prolong the life of their facility through various modifications. CR Meyer replaced 7 tainter gates, including side and sill embedded plates with new seals and chains. In the spillway refurbishment, the existing concrete operators bridge was replaced with a new, larger, structural steel operators bridge. The gravity dam was reworked. The top 5' of the 146' long gravity section was saw cut and removed, allowing CR Meyer to install a wider concrete gravity dam in its place. CR Meyer crews embedded and installed a minimum flow pipe in the gravity section of the dam. This minimum flow pipe was controlled by a stainless steel sluice gate installed by CR Meyer crews.



EIGHT FLAGS ENERGY COGENERATION SYSTEM - FERNANDINA BEACH, FL

PROJECT SCOPE

CR Meyer was the overall general contractor for the project, overseeing all aspects of the construction installation.

Eight Flags Energy's CHP plant looked into a new 20 megawatt CoGeneration system. This system provides approximately 50% of Amelia Island's electric requirements. The on-island generation reduced line losses and mitigated risks due to a single transmission line. Another benefit of the project was that it provided steam flexibility for Rayonier Performance Fibers. This helped to optimize plant operations and, in turn, provided financial benefits to the local economy.



OUR EXPERIENCE



FABRICATION SHOP

BADGER MINING CORPORATION RESIN COATING PLANT PROJECT - TAYLOR AND MERRILLAN, WI

PROJECT SCOPE

Since 2005, Badger Mining Corporation, formally Atlas Resin, chose CR Meyer as their design/build contractor for their four processing towers, warehousing, labs, rail loading, truck loading, scaling and the corporate office.

For this project, CR Meyer and Badger Mining began with a master planning meeting over the course of two days. The general plant arrangement was developed, followed by the design. The design of each facility was fast tracked in order for construction to begin before the completion of the design. As a result, the project schedule was shortened.



CR Meyer is heavily vested in high quality, accurate, and precise custom pipe fabrication for its customers.

Our company operates a fully-equipped 59,500 square-foot pipe fabrication facility in the heart of Wisconsin's Fox River Valley with the ability to meet industry- or company-specific piping specifications, including those for process, hydraulic, pneumatic, steam, and specialty applications.

Because piping systems are often on the critical path, CR Meyer's expert capabilities help assure properly fabricated and installed piping systems to speed check-out and pave the way for smooth start-ups.

For more information, visit www.crmeyerfab.com

Welding Capabilities: GTAW, SMAW, GMAW, SAW



Cranes: 2-ton to 15-ton capacity



Major equipment: positioners, pipework welders, welders, plasma cutter, marvel saw, pneumatic beveling machine, and smoke-eaters



Materials: stainless steel, carbon steel, high yield steel, hastelloy, and other specialty alloys

LEADERSHIP CENTER



Investing in our future by capturing and preserving the heart of our company's wisdom and experience. The goal is to pass on collective wisdom from our tenured tradespeople to the next generation.

Training has always been our foundation for employee growth and development. To assist in this expanding training regime, CR Meyer acquired a facility in Kaukauna, Wisconsin, named the *Charles R. Meyer Leadership Center*. The leadership center is equipped with a paper machine, extruders, alignment tools, and other equipment to support these training efforts.

The training program integrates hands-on training with classroom learning in the areas of safety, administration, professional development, and technical development, to develop key personnel into future leaders.

On site paper machine



Fourth generation CR Meyer employee learning welding techniques



A CR Meyer employee participating in a training exercise to rescue someone from a confined space



Laser Tracker Training



Every project begins with people risking their reputation by making the call on which contractor to use. When you're part of that decision, **your best option is to choose wisely.** Choose a

contractor who understands the value of minimizing your risk. A contractor willing to do whatever it takes to deliver the results you need.

Your best option is to choose CR Meyer.



www.crmeyer.com