

VEMAX

We specialize in Slitter inspection Rewinders for all web widths offering a wide selection that fits your needs.



Quality

Vemax is an integrated company.

We offer quality and customer satisfaction.

Security

Vemax machines are protected in accordance with the most stringent demand for operator safety in accordance with CE certification.



Training

Included with the machine installation, is operational training to understand the machine and start production.



PREMIUM LINE

SLITTER INSPECTION REWINDERS

YOU CAN HAVE ONE

Since 1988, Vemax has produced the best solutions, supplying the biggest flexible packaging, tags and label companies in the world. We manufacture, offer and supply globally a large and growing portfolio.

Our growth and success are based on the continued investment in high technology and innovations, to provide high quality, slitter inspection rewinder and finishing machines to the market. We offer solutions with the best cost, quality, profitability and total satisfaction to our customers.



+1 404 823 7193

thomas.reardon@vemaxcompany.com



www.vemaxcompany.com

VEMAX INSPECTIONS

Our company has provided equipment to the label, flexible packaging, foil, tags and paper industries for over 30 years. Vemax offers Inspection, Rewinders and Finishing Machines using the latest technology and innovation for customers worldwide.

VRR HD LINE

Premium machine for working with various materials to give you maximum precision and efficiency.

Available in widths:

■ 430mm ■ 520mm

■ 700mm

Maximum speed: 400 m/min



VRR TA V-380 LINE

Automatic Splice head. Rewinder with double shaft driven by servo motors. The machine stops for automatic change and slitting.

Available in widths:

■ 380mm

Maximum speed: 400 m/min



VRR VB LINE

Slitter inspection Rewinder for booklet insert label.

Available in widths:

■ 380mm

Maximum speed: 400 m/min



IT MEETS YOUR NEEDS

INSPECTION

Vemax has an exclusive using E+L Smartscan 2000. The inspection System will halt automatically on the splicing table.

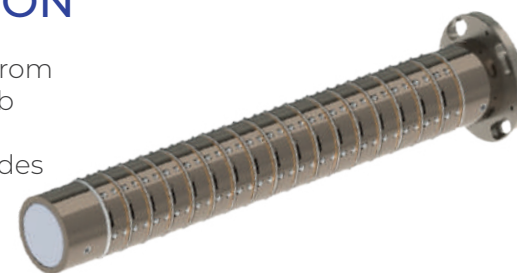


Availability to use strobe.



REWINDER STATION

Rewinder with expansive shaft from 1" to 6", or differential shaft for job with difference at grammage. Quick change system that provides the interchangeability of mandrils with maximum efficiency and agility.



TECHNICAL CHARACTERISTICS

UNWINDER

Maximum width 800 mm
Minimum width 150 mm
Maximum diameter 1000 mm
Core diameter 3"
Maximum weight 200Kg

REWINDER

Maximum width 800 mm
Minimum Cut 15 mm
Maximum diameter 600 mm
Core diameter 3"
Maximum weight 50Kg

VERSATILITY

Vemax slitter inspector rewinders make it possible to work in a variety of ways and applications to meet your needs.

- Aligner system with randomizer.
- Antistatic bar.
- Camera aligner system (Optical Sensor).
- Label counting sensor.
- Slitting system with rotary knives or blades.
- Flag sensor
- Venturi system for extraction of refill.
- Sensor for the detection of label failure (Precision Ultrasonic Sensor).
- Web lift.

SUPPORT



Vemax machines offer remote connection technology, so that we can offer support without the need for a face to face technician. An RJ 45 port is available on the CPU. The installation is the customer's responsibility such as cables and the internet signal.

TECHNOLOGY AT YOUR FINGERTIPS

SIC

Vemax slitter inspection rewinder use the exclusive SIC Series Operating System. Developed to deliver agility and efficiency for the operator.



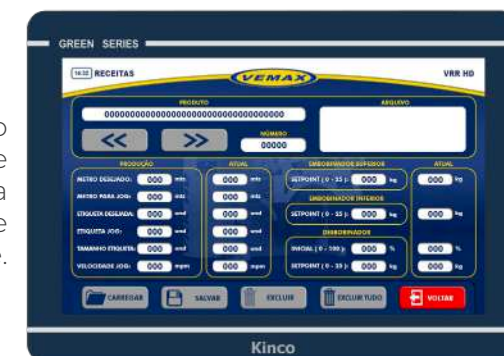
SECURITY



The system has an individual password per operator, with access levels (Administrator, Operator and Maintenance) to ensure even more security.

RECIPE

To further facilitate the day to day operation, there is a recipe control, which stores the data of each product to decrease the operator's setup time.



SIAP



SIAP makes it possible to manage the machine's productivity. The operation must detail the reason for the stops (change of material, splicing, breakage of material, etc.). Date, time, work order operator ID and machine ID are also recorded. The advantage of SIAP is that your data can be incorporated into the ERP system present at the factory to unify the company's management in a single place. This data can also be exported as a spreadsheet (CSV).